



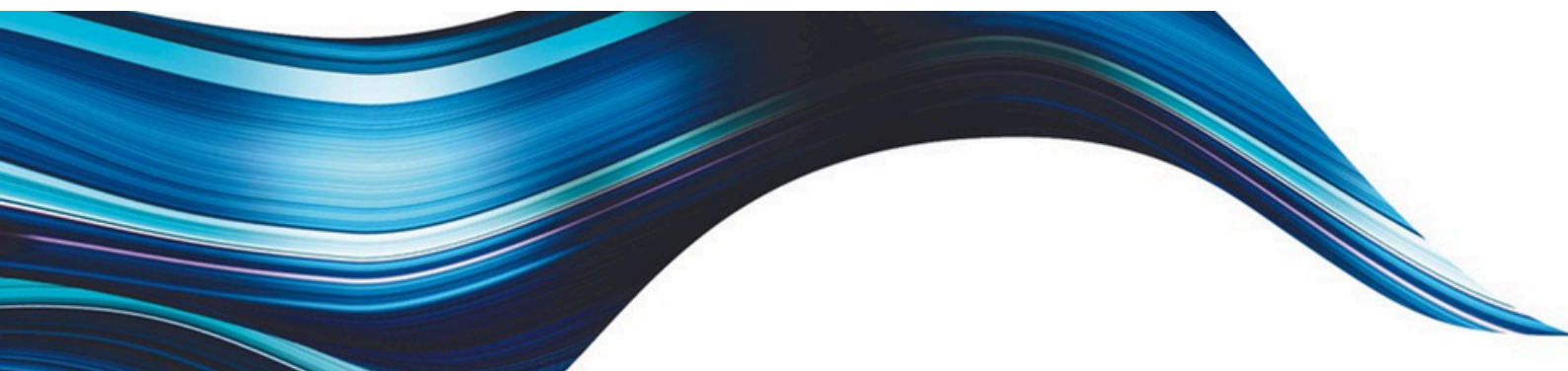
2027 Year 7-12

# INFORMATION BOOKLET

**STUDENTS COMMENCE ON MONDAY 1st FEBRUARY 2026**

# CONTENTS

- Principal's Message
- Our Vision
- The SRC Way
- Educational Supplies-Stationery and Booklists
- Charges and Contributions
- Your Child's Costs Explained
- Payment Options and Support
- 2026 School Timetable
- School Uniforms Information
- Third Party Approval
- Connect
- Bring Your Own Device (BYOD)
- Attendance
- School Map
- Contact Us



# PRINCIPAL'S MESSAGE

Congratulations on your choice of Southern River College for your secondary education. Southern River College is a vibrant school community that is meeting the needs of its students through dynamic programs, pathways and partnerships. We aim to build a place of belonging for all our students. This booklet outlines important information for our students and parents/guardians. Southern River College seeks to create opportunities to engage and inspire all students as they progress through our educational pathways.

Along with a general education program, our Educational Pathways programs include Academic Enrichment, Vocational Education Programs and STEM Education Programs. We support our student's cultural and sporting pursuits through our Inspire programs in Music, Soccer Volleyball and Netball as well as strong and engaging Arts and Technologies courses. We recognise that not all students learn at the same levels and provide support programs via our Teaching and Learning Centre (TLC), Differentiated classroom practice, small group interventions and our Autism Extension Program (SALP). The college prides itself in the delivery of quality teaching and learning programs. Our students, in particular, have the opportunity to vary pathways tailored to meet the needs of the individual.

At Southern River College, we want to invest in our student's future by being open to their diversity and aspirations. We achieve this by creating enduring partnerships connecting industry and education using exemplary practice. We recognise that we are part of a global world and apply real-world modelling in our classrooms and teaching practice. We want our students to excel and promote academic excellence and vocational aspirations for our students. We are committed to being a Positive Behaviour School, this involves understanding social responsibility and applying our values. We build in students, parents and staffs a sense of belonging to a school community with clear goals and expectations. We want our students to exemplify our Southern River College's values to Succeed, Respect and Connect. We are a culturally responsive College and value our diversity and promote and the share the strengths of our Aboriginal students and their culture. We are inclusive of all our students regardless of their backgrounds and work to build string relationship with families and the community.

This booklet will assist you with an overview of key aspects of the College. Our goal is to make a difference while supporting our students in a positive learning environment. We want our students to develop the knowledge, skills, values and confidence to achieve their potential as individuals and as participants in a changing society. We encourage our students to be the best they can be and pride ourselves on delivering first class curriculum and pastoral care. Our focus is on making real opportunities for students to excel as they find their way from primary to secondary to their career aspirations and the global world.

I hope you and your child enjoy being part of our school community. We pride ourselves on inspiring young people to be the best they can be. If you want more information, please ring the college directly or visit our website [www.southernrivercollege.wa.edu.au](http://www.southernrivercollege.wa.edu.au).



Heath Dullard  
Principal



# OUR VISION

---

Sharing a sense of belonging where everyone is inspired and empowered to reach their full potential and be valued members of the community.





# SUCCEED

Success creates opportunities

ACADEMIC

- I try my personal best
- I come prepared and ready to learn
- I seek and apply feedback

EMOTIONAL

- I take responsibility for my actions
- I demonstrate a growth mindset
- I remain on-task and focused

# RESPECT

Respect promotes safety

ACADEMIC

- I am an active listener
- I follow classroom routines and expectations
- I use appropriate and encouraging language

EMOTIONAL

- I am considerate and kind
- I represent the school with pride
- I take care of my learning environment



# CONNECT

Connection fosters belonging

ACADEMIC

- I contribute positively to classroom discussions
- I celebrate others' successes and strengths
- I lead by example

EMOTIONAL

- I am proud of my culture and identity
- I am inclusive of others
- I participate in house, school, and community events

# SUCCEED

Success creates opportunities

# RESPECT

Respect promotes safety

# CONNECT

Connection fosters belonging

A  
C  
A  
D  
E  
M  
I  
C

I try my personal best.  
I come prepared and ready to learn.  
I seek and apply feedback.

I am an active listener.  
I follow classroom routines and expectations.  
I use appropriate and encouraging language.

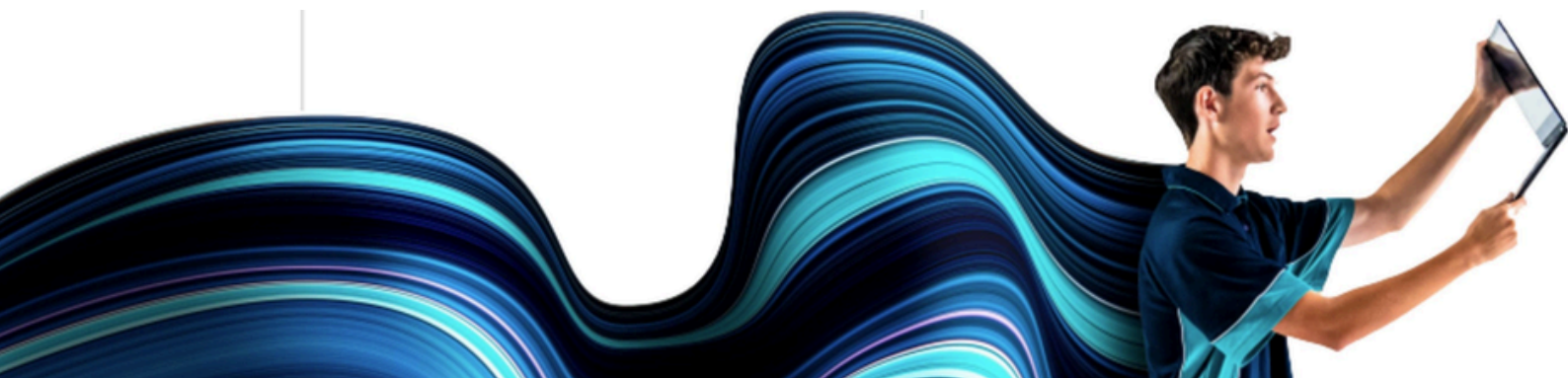
I contribute positively to classroom discussions.  
I celebrate other's successes and strengths.  
I lead by example.

E  
M  
O  
T  
I  
O  
N  
A  
L

I take responsibility for my actions.  
I demonstrate a growth mindset.  
I remain on-task and focused.

I am considerate and kind.  
I represent the school with pride.  
I take care of my learning environment.

I am proud of my culture and identity.  
I am inclusive of others.  
I participate in house, school, and community events.





TO SHOP IN STORE VISIT:

263 Allen Road,  
Forrestdale  
*OR*  
751 Marshall Road,  
Malaga



STATIONERY & BOOKLISTS

Arrangements have been made through Campion to stock books and personal items applicable to courses offered at Southern River College.

Please liaise directly with Campion if you wish to have the booklist and stationery delivered to your house. For this to occur **you must pay and order online by Friday 12th December 2025 via [www.campion.com.au](http://www.campion.com.au).**

Your delivery will be dispatched no later than week ending 28th January 2026, but where possible it will be dispatched earlier.

**Please be aware that online orders will be charged \$10.00 and late orders will be charged \$18.00. Campion also offer Click & Collect for FREE.**

**Credit Card and EFTPOS Facilities are available**

---

**TRADING HOURS:**

---

**Monday- Friday**

---

**9:00am- 5:00pm**

---

**Closed: Weekends and Public Holidays.**



**SPECIAL TRADING HOURS FOR 2025/2026**

Wednesday 24 DEC 2025 9:00am-01:00pm  
 Wednesday 31 DEC 2025 9:00am-01:00pm  
 Saturday 31 JAN 2026 9:00am-01:00pm

Tuesday 30 DEC 2025 9:00am-05:00pm  
 Saturday 24 JAN 2026 9:00am-01:00pm  
 Saturday 07 FEB 2026 9:00am-01:00pm

## CHARGES & CONTRIBUTIONS



Contributions and charges enable the College to enrich our curriculum, allowing students to experience the full benefit from the Voluntary Contributions and Compulsory Charges they pay. Failure to pay your contributions and charges places a large burden on the College community hence the College relies upon all families to contribute.



### How your Contribution helps...

We believe that the best way to provide quality education is through the provision of modern texts and equipment for students. Your payment of voluntary contributions will result in a higher standard of educational resources for your child.

### Where your money goes...

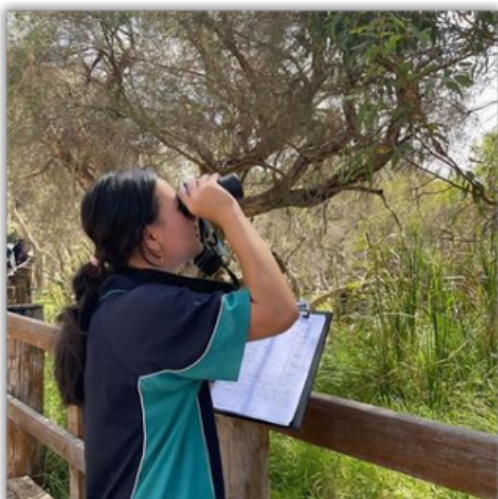
Southern River College urges you to pay this portion to enable the college to provide your child with the education we believe they deserve. Funds collected within the year are spent on resources for that year.



### How to get ahead in payments...

We recommend you start making plans now so that you are in a position to pay your Voluntary Contributions and Compulsory Charges prior to the end of Term 2, 2026.

To help with this Southern River College has payment options available. If you would like more information, please contact the College for further information.



## GENERAL INFORMATION FOR ALL YEAR GROUPS



The following information is provided in the hope of making the contributions and charges structure clear for parents and caregivers. Southern River College has directed its efforts towards keeping costs as low and as equitable as possible. The college takes a positive approach to collecting voluntary contributions from parents and caregivers of students.

With respect to compulsory charges for Years 7 to 12, the College will actively seek full payment of compulsory charges when appropriate. The Voluntary Contribution of **\$235.00** enables the College to supply students with curriculum resources in the compulsory learning subjects including English, Mathematics, Science and Humanities and Social Science. Revenue from voluntary contributions also contributes to the supply of physical education equipment, audio-visual equipment, information technology facilities, and photocopied materials.

In Years 7 and 8 students are provided with a set timetable including compulsory learning subjects as well as the opportunity to experience a range of elective subjects in The Arts (Music/Visual Art) and Technologies (Design & Tech/Home Economics/Digital Technologies).

In Years 9 and 10 students complete English, Mathematics, Science and Humanities and Social Science, and their choice of elective subjects. Students may choose low-cost electives that fit within the voluntary contribution, however, can also choose extra cost option subjects that attract a compulsory charge.

This is with the exception of students who are in Specialist Programs and Inspire Programs.

### COMPASSIONATE VIEW

This college is only too aware that the payment of college contributions and charges can be a burden for some families. Part payments and credit card debits are all available to support parents experiencing justifiable difficulties.

Ignoring accounts and reminders is unhelpful to all parties. The college is also keen to assist parents in selecting options that they can afford. To this end, subject charges will always be provided to parents prior to the selection of subject.

### THE LEGAL POSITION

The State Government, through the Department of Education, provides placement at educational facilities for all students who choose to attend Government colleges. The Department also pays for the wages of all teaching and non-teaching positions plus costs such as repairs, maintenance and utilities. The Government does not provide for all goods and services which students use, and it is reasonable for parents to contribute to these costs. In the absence of a court order to the contrary, BOTH parents are jointly and severally liable for the payment of their child's school fees.

The Southern River College Board, in support of this process, has endorsed the following actions:

Statements of your outstanding amounts will be sent out twice a term until cleared.



Compulsory charges unpaid as at end of Term 2 could be referred to a debt collection agency unless prior arrangements have been made.



Where parents with outstanding Compulsory Charges have failed to arrange and commit to a payment plan, the student may be removed from their chosen Elective courses and be placed in a general course that satisfies the requirements of the Curriculum Framework.

#### Please Note:

Outstanding compulsory charges are rolled over to the student's record the following year where applicable and could accumulate into a substantial amount. For this reason, we encourage early payment each year

## ADDITIONAL COST ITEMS 2026

### SOUTHERN RIVER COLLEGE- WHOLE SCHOOL

#### Extra Cost Optional Components of Education Programs Anticipated Excursions, Incursions, Competitions and Other Activities

As required by the Department of Education, we are informing parents and guardians of the potential costs of excursions, incursions, camps, competitions, and other activities that **MAY** take place in 2026. **Participation in these activities is voluntary.**

The charges listed are an estimated maximum amount that will not be exceeded. Payment will be required at the time of the activity during the course of the year. **Please do not pay until notice has been given.** There may be additional excursions throughout the year that have no cost to parents or guardians.

Learning Areas	Description (Per course within each Learning Area)	Years	Possible Number per Course	\$Amount up to a maximum of per each student
All subjects	Printing & photocopying	7 - 12	1	\$20.00
	Yearbook		1	\$20.00
	Textbooks/ Workbooks/ eBooks		4	\$100.00
	Extra resources for classroom projects (Textiles, Wood, food, containers, etc.)		1	\$120.00
	Incursions		4	\$100.00
	Excursions		4	\$100.00
	Reward Activities		4	\$75.00
	Camps		2	\$250.00
Competitions	4	\$20.00		
Physical Education / Outdoor Education	Adventure Activities	7 - 12	4	\$50.00
	Association Fees		1	\$300.00
	Competition Fees		4	\$100.00
	Inter-School Sport		4	\$400.00
	Inter-School Sport Team Nominations		1	\$100.00
The Arts	Musical Instrument Hire	7 - 12	1	\$125.00
	Workshops / Performances/Productions		4	\$25.00
	Music Software License		1	\$30.00
Student Services (Wellbeing Centre)	Master Study Planning Package	7 - 12	1	\$30.00
	Leadership Days	7 - 12	4	\$60.00
	Cultural Awareness Day or similar	7 - 12	2	\$20.00
	River Cruise	11	1	\$100.00
	Year 12 Ball	12	1	\$120.00
STEM	Robotics Interstate Competition (may include scholarships, fundraising & sponsorships)	7 - 12	1	\$500.00
Science	Competitions	7 - 12	4	\$20.00
TLC	Books to participate in TLC	7 - 9	1	\$85.00/set

## YOUR CHILD'S COSTS EXPLAINED



### OTHER OPTIONAL COMPLUSORY CHARGES - YEARS 7-10

Other optional courses outside the basic core program incur additional charges above the voluntary contribution of \$235 for Year 7 – 10 students. For example, Specialist Soccer, Netball, Volleyball, Music and Academic Programs attract compulsory charges for items such as consumable materials and venue hire. Charges relate to items that students consume over and above what is supplied by the Department of Education.

Specialist Soccer, Netball, Volleyball, Music and Academic Programs offered at Southern River College and will incur compulsory charges over and above the voluntary contribution for a nominal curriculum choice. Charges for other optional courses are required to be paid at the start of the college year. Charges for excursions and events can be paid for at the time of the event is organized.

### OTHER OPTIONAL COMPLUSORY CHARGES - YEARS 11-12

Charges will depend upon the course chosen. Some specific courses will incur higher costs dependent upon such items as textbooks, subject specific resources, materials, excursions, certificates and work placement. Students involved in Outdoor Education, Physical Education Studies Year 10-12 and, work placement must pay the associated fees prior to commencement of students starting these subjects/programs.



### VOLUNTARY APPROVED REQUESTS

- **Parents and Citizens Association - \$15.00**

The P&C Association supports the students at Southern River College in a variety of ways including assisting with fundraising events.

- **Chaplaincy - \$15.00**

Our college Chaplain is not an employee of the Department of Education and is funded by the College, our community and parent donations. The Chaplain's role in the College has been invaluable have benefited all students. Your donations make a difference.

- **Bus Fund - \$10.00**

Our bus is aging and will eventually need to be replaced; these contributions help us to save for a replacement. We would particularly request students enrolled in the Inspire Sports Programs and Outdoor Education to contribute as they are the main users.

- **Student Services - \$10.00**

Student Services subsidies social/ reward events, councillor orientation days, prizes and awards across all year levels.

- **Building Fund - \$15.00**

Helps to continue upgrading facilities.

### SECONDARY ASSISTANCE SCHEME

The Secondary Assistance Scheme is available to parents/guardians of secondary students that hold a Centrelink Family Health Care or Pensioner Concession Cards or Veteran's Affairs Pensioner (Blue) Concession Card. You will need to bring your card to Reception at the start of the school year to apply. The SAS comprises of an Education Program Allowance of \$235 that is put towards Charges and a Clothing Allowance \$115 that can be paid to the school for the payment of Charges or paid to the parent/guardian for uniform expenses.



**CLOSES THURSDAY 02 APRIL 2026**

#### ELIGIBILITY

You are eligible for the SAS if you: hold an eligible concession card, with the name of the student listed. This could be either a:

- Services Australia (Centrelink) Pensioner Concession card
- Services Australia (Centrelink) Health Care card
- Department of Veterans' Affairs Pensioner Concession card (blue card only).
- Have children enrolled in Years 7 to 12 studying a full-time secondary course at a Western Australian school or registered with a Western Australian Department of Education Regional Office for homeschooling.
- Have not previously claimed for the same student in the same year (or where another parent/guardian has made a claim previously)
- Are not foster parents
- Are an independent student in secondary school with an eligible concession card.

#### PAYMENT OPTIONS

ALL CHARGES AND CONTRIBUTIONS MUST BE PAID BEFORE THE END OF TERM 2. DEBT COLLECTORS WILL BE USED AFTER THIS TIME TO RECOVER UNPAID AMOUNTS.

Option 1: QKR App.

Option 2: Internet Banking Setup with your bank.

Option 3: Phone or cash payments.

Contact us on 9391 6500 during school hours with your credit card details or visit the front office.

Option 4: Payment Plan.

3 Equal Credit Card Deductions (Debited February, March and April.)

Option 5: Payment Plan.

5 Equal Credit Card Deductions (Debited February, March, April, May and June.)

# COLLEGE TIMES

In 2026 Southern River College will have a 25-period week.

This means students will have 5 teaching periods each day.

Every Tuesday the College will finish at 14:30.

All other days the College will finish at 14:50

Period	Monday	Tuesday	Wednesday	Thursday	Friday
1	8:40	8:40	8:40	8:40	8:40
2	9:45	9:40	9:40	9:45	9:40
Lunch 1	10:50	10:40	10:40	10:50	10:40
Home Group			11:05		11:05
3	11:15	11:05	11:25	11:15	11:25
4	12:20	12:05	12:25	12:20	12:25
Lunch 2	13:25	13:05	13:25	13:25	13:25
5	13:45	13:30	13:50	13:45	13:50
School Finishes	14:50	14:30	14:50	14:50	14:50

## Contacting the School

71 Southern River Rd, GOSNELLS



### Telephone

Administration 9391 6500

Student Support - Absentee 9391 6523

### e-mail

[southernrivercollege@education.wa.edu.au](mailto:southernrivercollege@education.wa.edu.au)

### Website

[southernrivercollege.wa.edu.au](http://southernrivercollege.wa.edu.au)

## COLLEGE UNIFORMS

At Southern River College we wear our uniform with pride



College shirts, shorts, jackets, skirts or pants - with logo

Plain navy long sleeve shirts under school short sleeve shirts

Closed in shoes on site – please no thongs, no slides/sandals

Please no ugg boots or slippers



# UNIFORMCONCEPTS

NELL GRAY

### ADDRESS

24/26 Solomon Road  
Jandakot

Phone: 9270 4650

E-mail: [jandakot@uc.nellgray.com.au](mailto:jandakot@uc.nellgray.com.au)

Website: [nellgray.com.au](http://nellgray.com.au)

### Opening Hours

Monday 9 - 5pm

Tuesday 9 - 5pm

Wednesday 9 - 5pm

Thursday 9 - 6pm

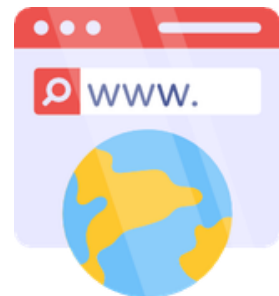
Friday 9 - 5pm

Saturday 9 - 1pm

Sunday Closed

## THIRD PARTY APPROVAL

At Southern River College you will need to review and give approval to third party (services provided to your student from sources other than the Department of Education) software we use with your student to achieve their curriculum. The third party software we have selected have been screened by the Department of Education and carry none to minimal risk. All this information will be provided to you in the online form you need to complete.



<https://forms.office.com/r/8in2D3rkf5>



# Connect



For secure, convenient access to your child's education anytime, anywhere

Know what's happening in your child's class



All communication in the one place for all your children



Easy access to marks, reports and homework



Visit

[connect.det.wa.edu.au](http://connect.det.wa.edu.au) or

get the app



If you would like to know more about **Connect** or ConnectNow please contact:  
Southern River College

71 Southern River Road, Gosnells WA 6110

P: 08 9391 6500

[southernrivercollege@education.wa.edu.au](mailto:southernrivercollege@education.wa.edu.au)



# Bring Your Own Device

## What is BYOD?

BYOD encourages students to bring their own devices to:

- Fully engage with Connect, and other third-party software, which the College uses to deliver its subjects.
- Become future ready for the technology-based society we live in by giving them the knowledge, skills, and confidence to make ICT work for them.

## Year 11 and 12

The years of learning and study require students to have their own laptop (as per specifications below). All ATAR students are required to be ATAR ready.

Students studying Certificate courses are also encouraged to purchase a laptop.

The school does not currently have the capacity to provide computers given the increase in numbers to our 1200 students.

A good quality computer will last for 3-4 years, covering students attending university and/or TAFE courses.

## Preferred Device Specification

Processor	<b>Windows</b> minimum core i5, AMD Ryzen 5 or better. <b>Apple</b> M1 or higher; devices should be no more than 4 years old. No Celerons or ARM processors.
Memory Storage	Minimum 8 GB of RAM.
Storage	Minimum 256 GB, however it is recommended to have 512GB Storage capacity or more. Note: We recommend purchasing a SSD (Solid State Drive) instead of a HDD (Hard disk drive) as it is much faster.
Operating System	Windows 11. Windows 10 or newer.
Battery Life	The device battery should last at least 6 hours. No charging of devices is permitted at school.
Wireless Connectivity	Minimum Wi-Fi standard: 5GHz dual-band, 802.11N. However, it is recommended to have: <b>802.11AC</b>
Screen Size	Minimum 13 Inches Maximum 15 inches.
Software/Applications	Windows Defender is included in Windows OS. All the students have free access to office 365 using their school account.
External Storage Devices	Students should purchase a portable USB drive for backups.
Laptop Protector/Case	It is recommended to buy a good quality laptop protector or case to prevent damage.
Insurance	It is strongly recommended to purchase: 1: Accidental Damage Protection insurance. 2: Extended Warranty coverage.

## Setup of Device at College

The IT technicians at the College will setup the device as follows:

- Set up printing
- Map shared drives
- Install free antivirus
- Connect to Wi-Fi
- Rename the device according to the school network protocols

## Appropriate use of Device and school network during school hours

Students must comply with the Department of Education (DoE) and the SRC Online Services Acceptable Use Agreement concerning the use of BYODs at school and while connected to the DoE network.

The device usage, including school network and internet, applications and learning software will be monitored using classroom management software AB Tutor which will be installed and only functions in the school network.

The page features a large, light blue background graphic on the right side that says "ATTENDANCE" in white, slanted capital letters. At the top left, there are three triangular images: a cheerleader in a blue and yellow uniform, a basketball player in a blue jersey with "GA" on it, and a close-up of a smiling young man's face.

## ATTENDANCE

At Southern River College, student attendance is a high priority.

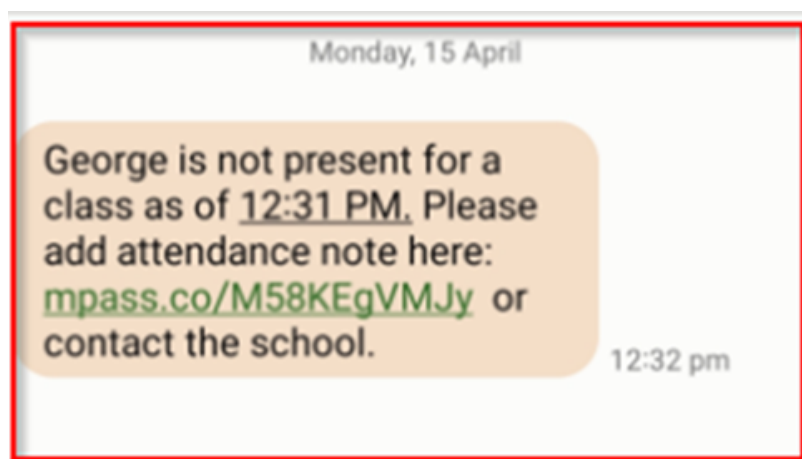
Southern River College uses automatic text messages (SMS) and via Compass to inform parents on their mobile phone of an unexplained absence or lateness. All Attendance SMS messages will now come from a new contact **SRC**.

**SRC** will notify parents, guardians, and caregivers of unexplained absences or late arrivals.

### What will parents receive?

It will send parents an SMS on their mobile phone when their child is marked absent without an explanation.

This is a sample message below. Parents will get this SMS with the link if their child is marked absent without an explanation. Parents should use this link to add attendance notes about their child's absence. Please note that the **link will be valid for only 48 hours. Do not reply to this message via SMS as the school will not receive it.** The school will receive your response via the link provided. Ensure the phone is connected to an Internet data plan or has WIFI access to use the hyperlink.



If the child is absent again without a prior explanation, parents will get a new one-time link.

If parents do not use the link provided, they can notify the school of their child's absence via telephone or email.

If you have any other questions regarding the Attendance SMS Communications, please call 9391 6523.



your move

## How to get to Southern River College

71 Southern River Road  
Gosnells

This map makes it easy to plan the best route to walk or ride to Southern River College



Imagine SOUTHERN RIVER COLLEGE  
METRONET



Southern River College is a Your Move School and encourages all students to walk, ride or scoot to and from school where possible.

Heaps of kids are walking, riding and scootering to our school every day. Here's a nifty little map to help you plan your way to school.

Getting active on the way to school means you have time to spend with your family and friends, can focus better in class, stay fit and healthy, plus gain some independence and do the right thing for our environment.

If walking or riding the whole way to school isn't an option, ask your parents to park nearby then walk or ride the rest of the way!



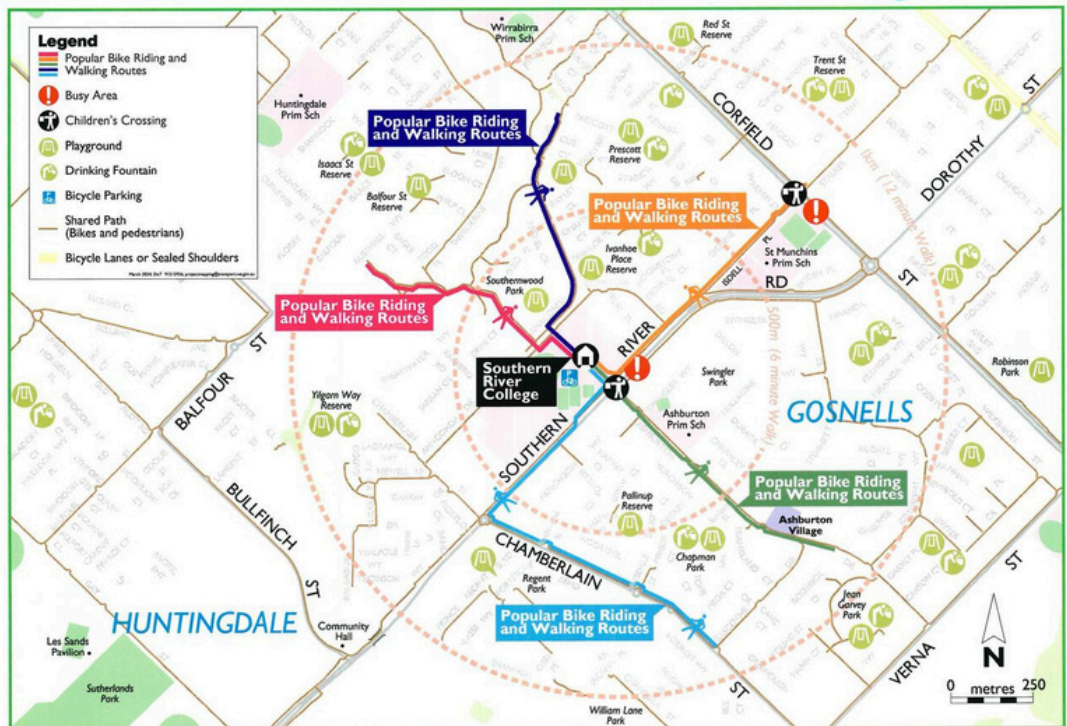
"I like to ride my bike to school because I like to be in nature, another reason is because it means that I am active every day. Riding my bike is fun and a good way to clear my head and get rid of extra energy from sitting all day at school." Michael, Year 12



"I ride my scooter because it is fun. I am always grumpy and hangry in the morning but riding my scooter with my mates puts me in a good mood. I always feel amazing when I feel the cool air on my face in the morning." Hisham, Year 10

DOT 91215955

## How to walk or ride to Southern River College



[www.yourmove.org.au](http://www.yourmove.org.au)

The information contained in this publication is provided in good faith and believed to be accurate at time of publication. The State, City of Gosnells or Southern River College shall in no way be liable for any loss sustained or incurred by anyone relying on the information. 052024

71 Southern River Rd, GOSNELLS

Telephone

Administration 9391 6500

Student Support- Absentee 9391 6523

E-mail

[southernrivercollege@education.wa.edu.au](mailto:southernrivercollege@education.wa.edu.au)

Website

[Southrivercollege.wa.edu.au](http://Southrivercollege.wa.edu.au)